

MODERN farmhouse style™



Dress Up a
Neutral Color
Palette



10
FARMHOUSE
KITCHENS
WE LOVE

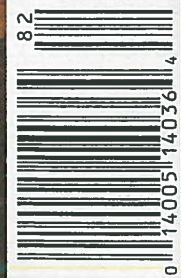
**GIVE
YOUR HOME
THE
BEST
OF OLD
AND
NEW**

**TIPS FOR USING
SALVAGED WOOD**
page 41

GET THE
CURB APPEAL
YOU ALWAYS
WANTED

Summer 2018
Display until September 3


\$999 U.S.



meredithSpecials



this photo: Large-format 12×24-inch tiles minimize grout lines in the handsome dark basalt stone flooring for a clean look that doesn't overwhelm the subtle patterns of shiplap and subway tiles on the walls. Homeowner Monica Garner loves soaking in the new freestanding tub with its breathtaking view and whimsical star fixture overhead. *opposite:* A shelf within reach of the tub is a handy place for a book, a glass of wine, or items a bather may need.



*Surface updates,
smart storage, and a
soothing palette
give a 1980s bath a
fresh perspective.*

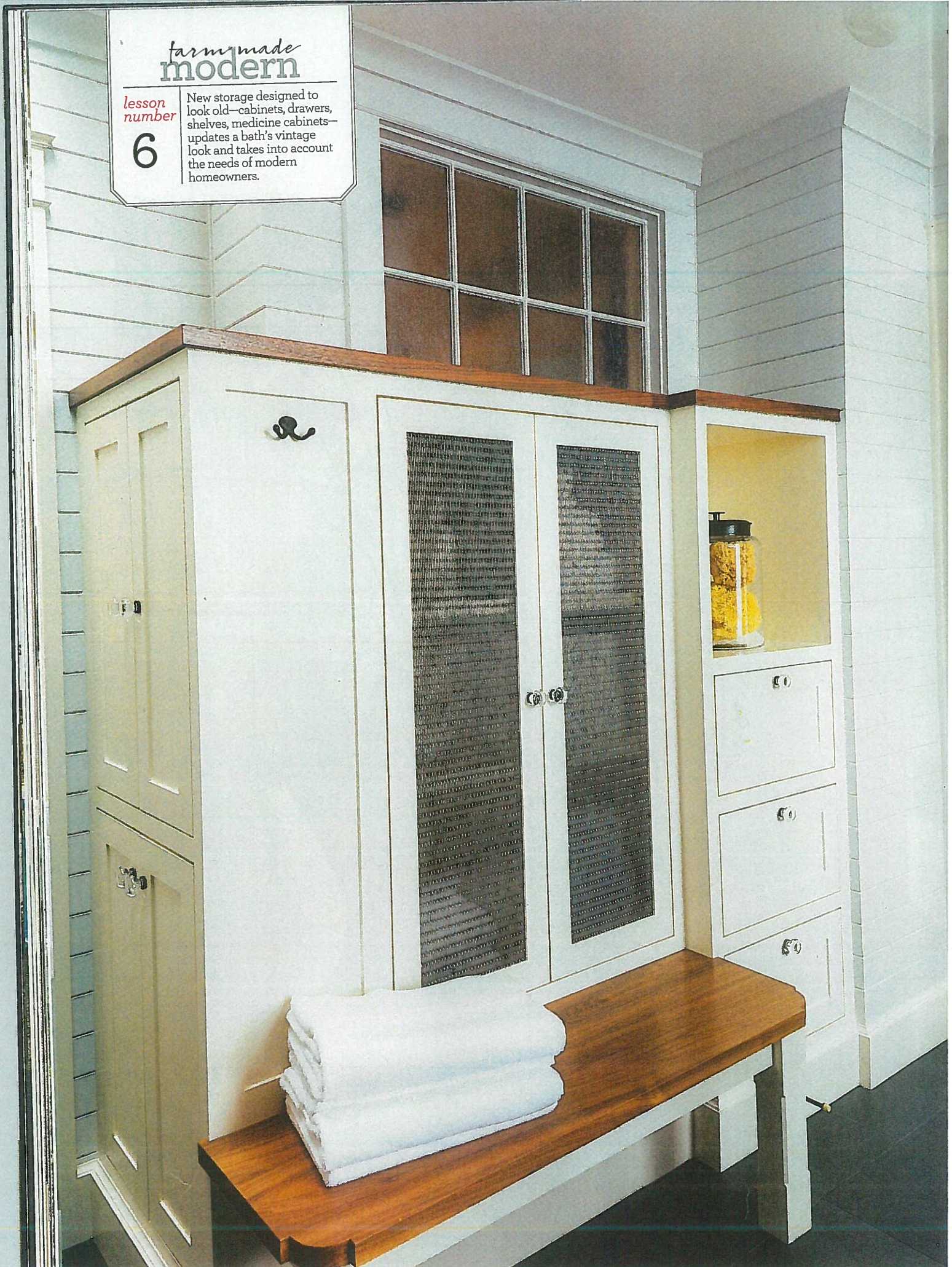
radiant *outlook*

farm made
modern

*lesson
number*

6

New storage designed to look old—cabinets, drawers, shelves, medicine cabinets—updates a bath's vintage look and takes into account the needs of modern homeowners.



A misplaced walk-in closet

and a bulky built-in tub prompted Curtis and Monica Garner to renovate their 1980s-era master bathroom. Designer Kim Clements of JAS Design Build merged a portion of the closet with the bath, replacing it with a stylish built-in storage cabinet and bench. New surfaces—subway tiles, shiplap walls, painted cabinetry, and a granite countertop, all in muted gray—“make the room feel soft and not stark,” Monica says. Although the original marble floor tiles were pretty, they didn’t give the Garners the fresh, crisp look they wanted. So Clements replaced the flooring with dark basalt stone tile, which anchors the room’s light, bright elements. Trading the clunky built-in tub for a shapely freestanding model and adding a long vanity—open beneath to keep the look airy—made the room feel larger. “We love this bath so much,” Monica says. “It has a great vibe for getting ready every morning.”

For resources, see page 96.



Relocating the walk-in closet to the master bedroom fixed a flaw in traffic flow and provided more opportunities for storage in the bath.

opposite: Built-in cabinets and a matching bench are topped with walnut for a warm, rustic accent. The cabinets occupy a portion of the former walk-in closet area and include designated space for Monica’s hair dryer just steps from the vanity. *above right:* The shower gained privacy with a new subway-tile enclosure. Vintage-style fixtures, including a handshower rail, complement the room’s old-meets-new aesthetic. *right:* The new vanity, tucked neatly between the shower on the left and a toilet compartment on the right, uses a single column of drawers and separate (but adjoining) medicine cabinets above to boost storage and define Monica and Curtis’ personal spaces.

